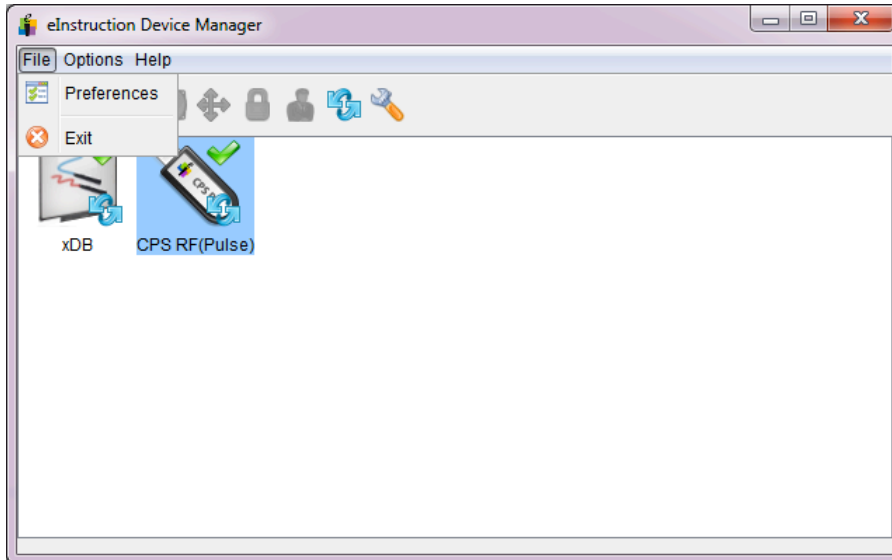
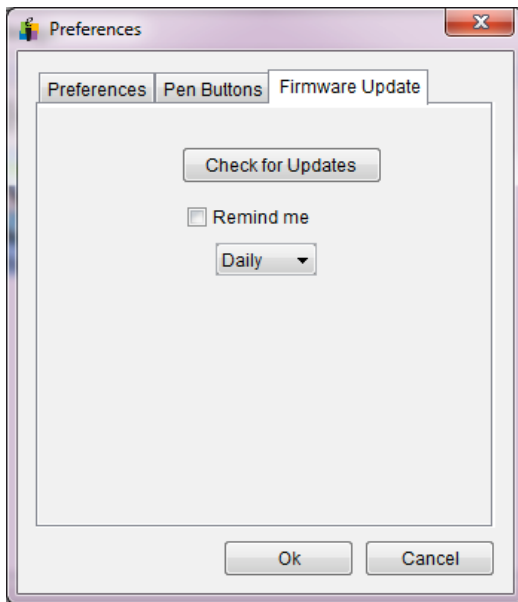


How to update your CPS Pulse RF receiver firmware

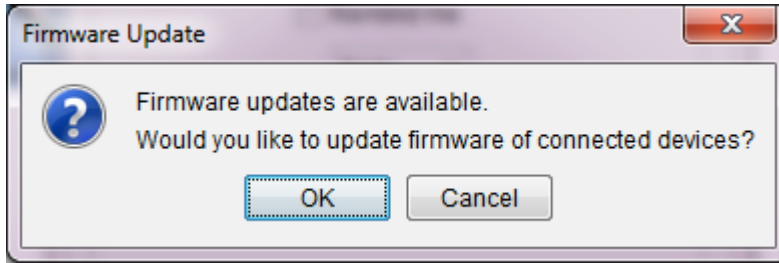
1. Download the latest version of the CPS software from the eInstruction website http://www.einstruction.com/support_downloads/downloads.html .
2. Remove any receivers or other eInstruction hardware from the computer you are using.
3. Install the new software.
4. Restart your computer.
5. Open the Device Manager and plug in the receiver you are going to update.
6. Select the appropriate receiver in DM, and go to File > Preferences



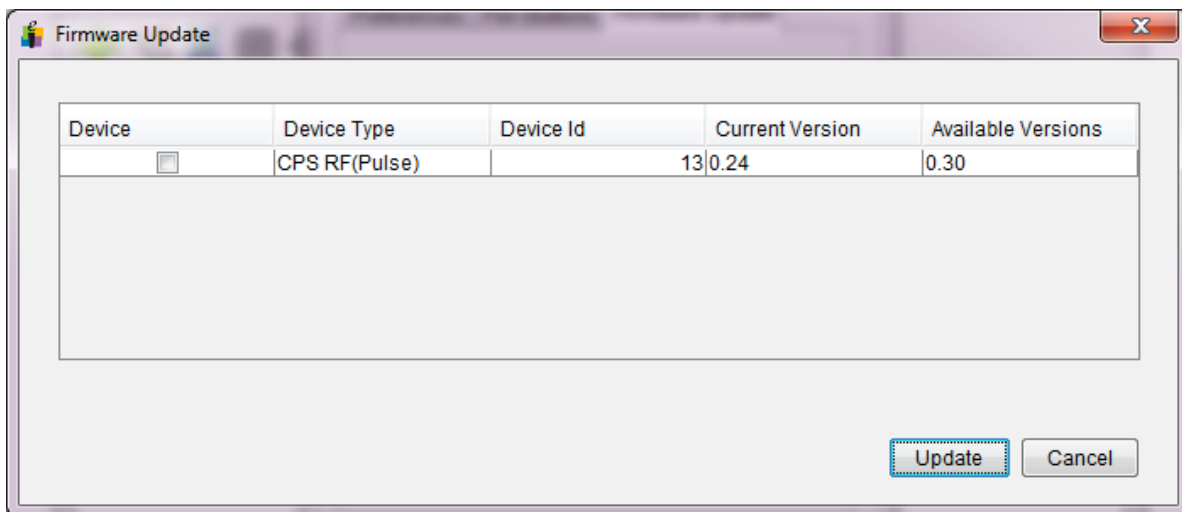
7. This will open up a dialog box – choose the Firmware Update tab. Click Check for Updates.



- You will be told firmware updates are available. Click OK.

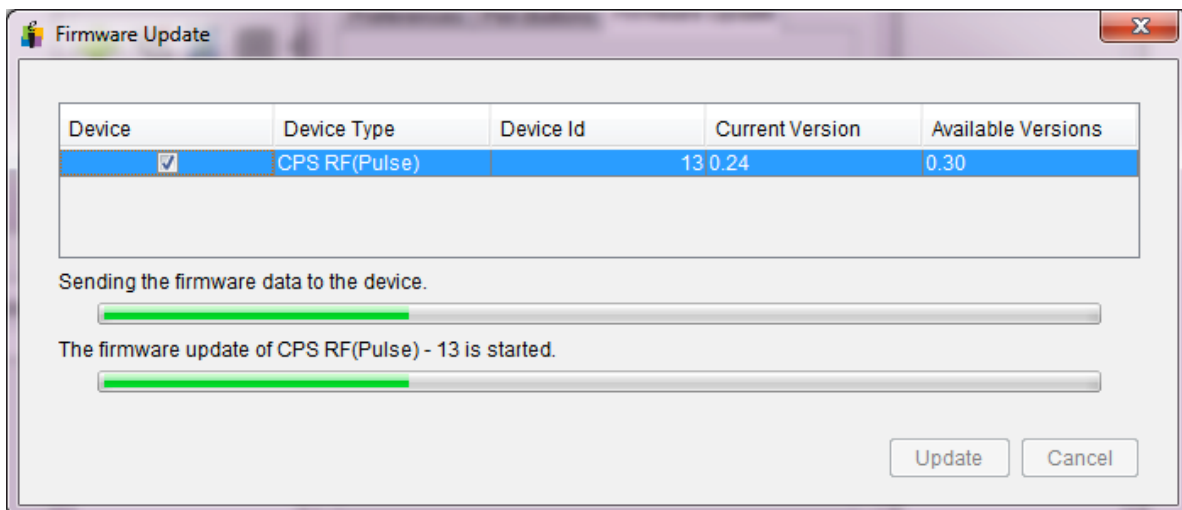


- Click Next on the confirmation screen, and you will see a list of firmware updates for your device.

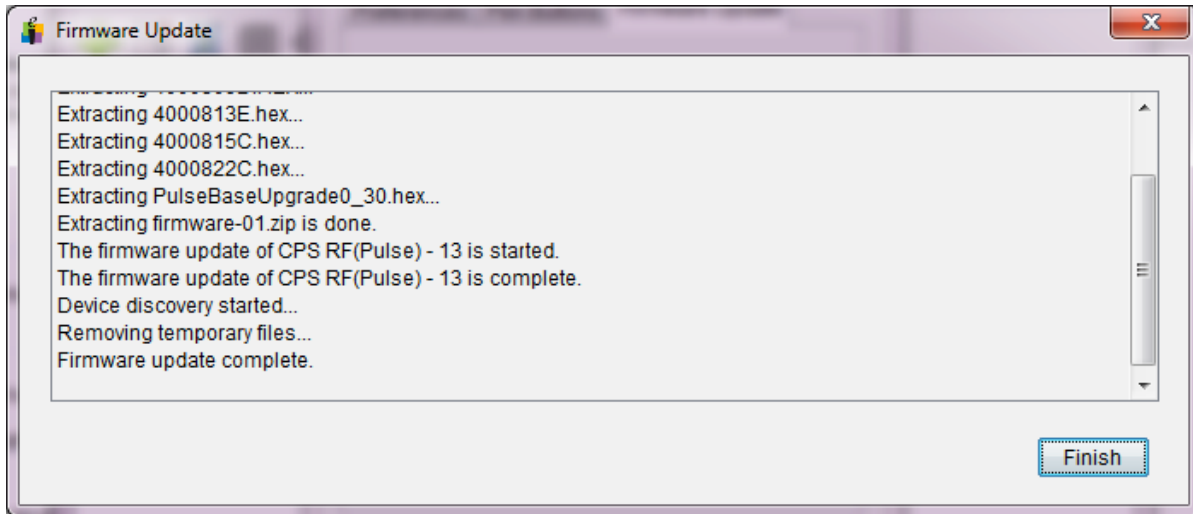


If the Current Version is the same as the Available Version, then you may Cancel the update. Otherwise proceed to Step 10.

- Check the box in the Device column. Click Update, and then click OK on the confirmation screen. A progress screen will open.



11. When the process completes, the following screen will display with the message “Firmware update complete”.



12. Click Finish.
13. Unplug the receiver.
14. If you have additional receivers to update, return to step 5 and complete the steps with the next receiver.

How to update your CPS Pulse Student Response Pad firmware

Overview

Implementation of the 140-character Essay question type in CPS and Response requires a firmware upgrade to both the Pulse receiver and the Pulse clickers. The instructions, above, cover updating the receiver. Following are instructions for updating the student response pads.

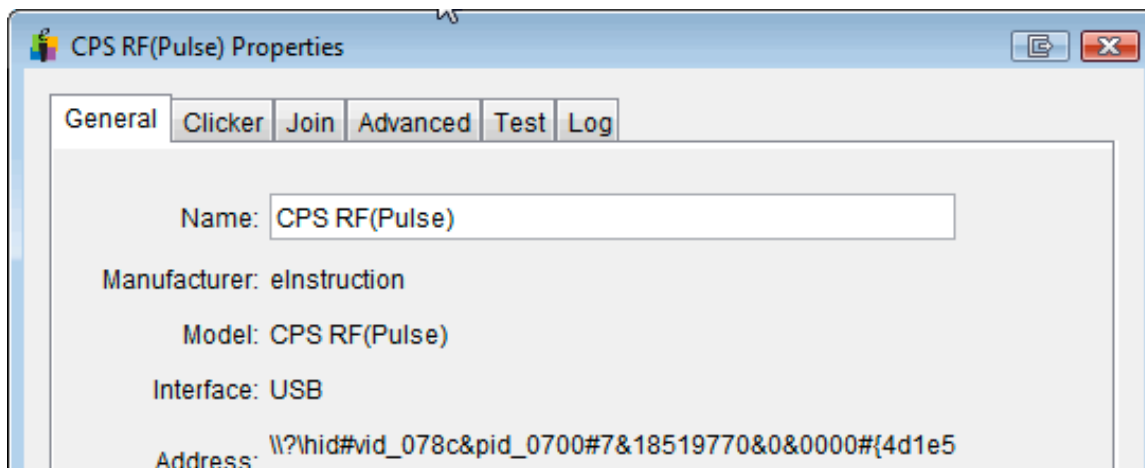
The versions of firmware available with this release are as follows:

Pulse Hub (Receiver): 0.30

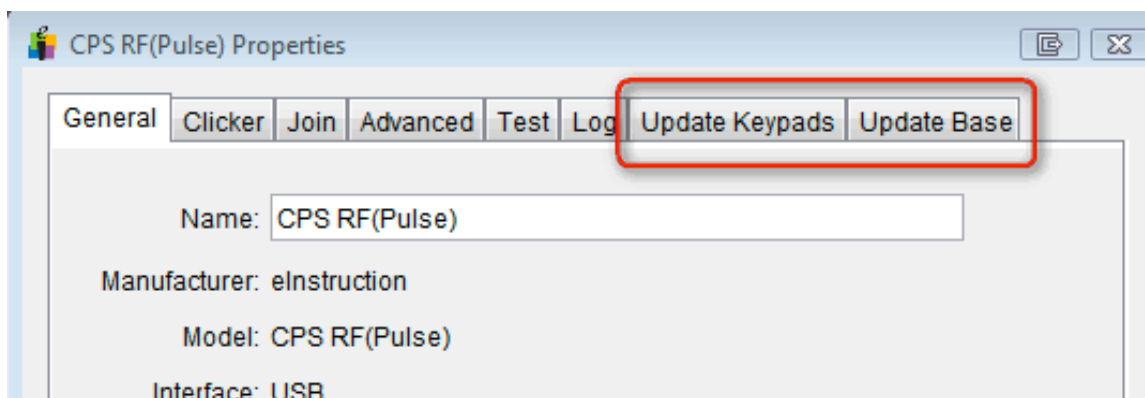
Pulse Clicker: 0.54

Accessing the firmware updaters

Start by opening the device manager and double-clicking on your Pulse receiver icon. This will open the *CPS RF(Pulse) Properties* window.



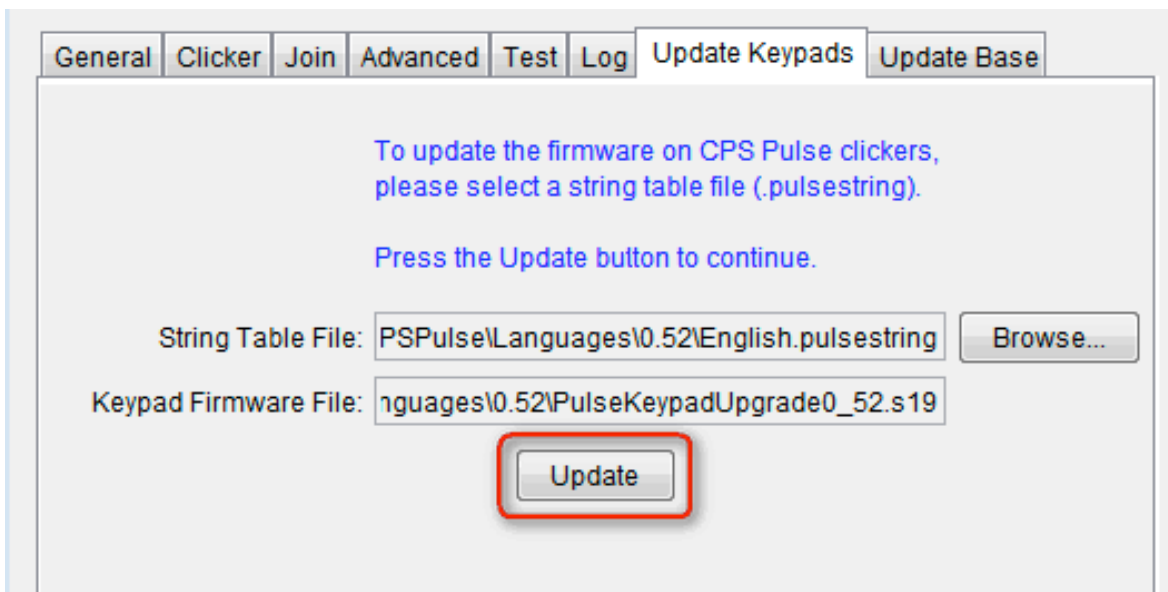
With the *Properties* window open, hold down the **Ctrl** and **Shift** buttons at the same time, and you will see two new tabs appear: *Update Keypads* and *Update Base*.



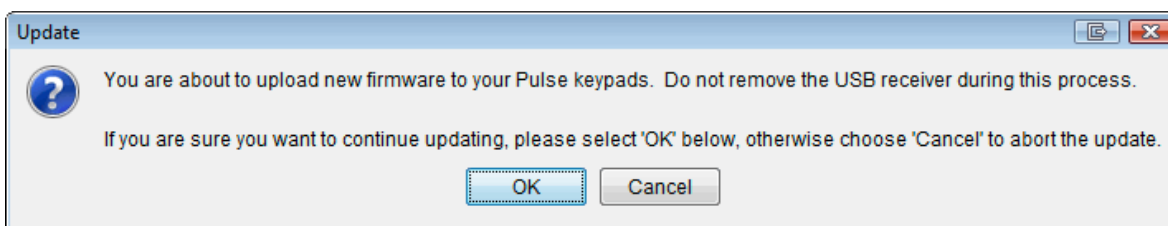
Updating the Pulse Clickers

To update your Pulse clickers, click on the Update Keypads tab. Then click the **Browse** button. This should take you to the appropriate folder (*Program Files/eInstruction/Device Manager/Firmware Updates/CPSPulse/Languages*).

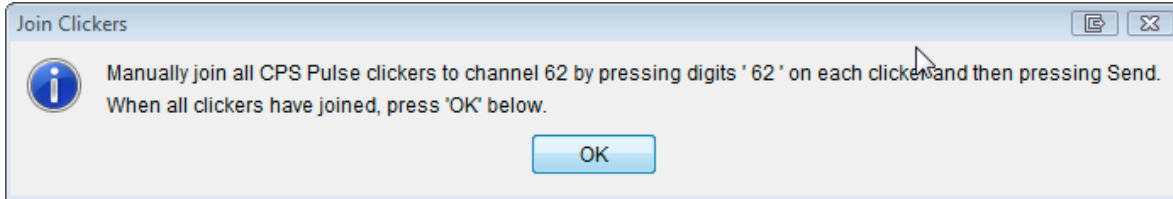
Next, select the folder for the firmware version to which you want to upgrade (there will normally be only one folder to choose from but there may be more – open the newest folder – 0.54) and choose the appropriate language. This will populate both of the necessary fields in the DM.



Click Update to begin the update process. You will receive a confirmation dialog asking if you are sure you want to perform the update.

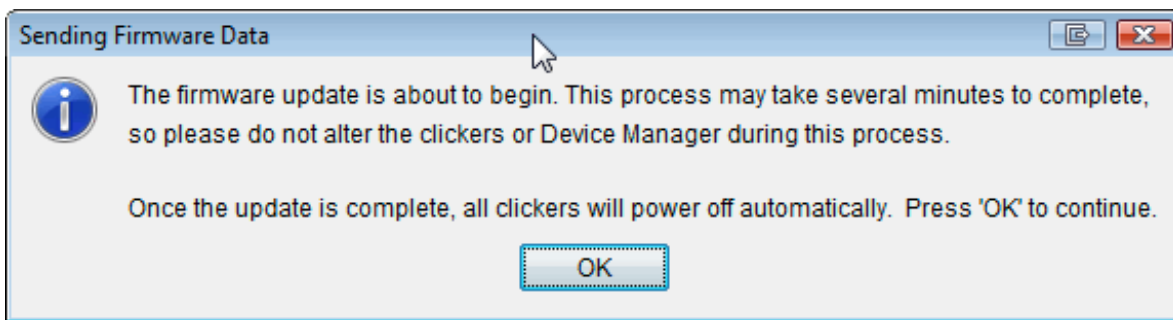


You will then receive a dialog asking you to have your pads join a specific channel. Enter the appropriate channel number on all pads you wish to update. When all pads have joined, click **OK**.



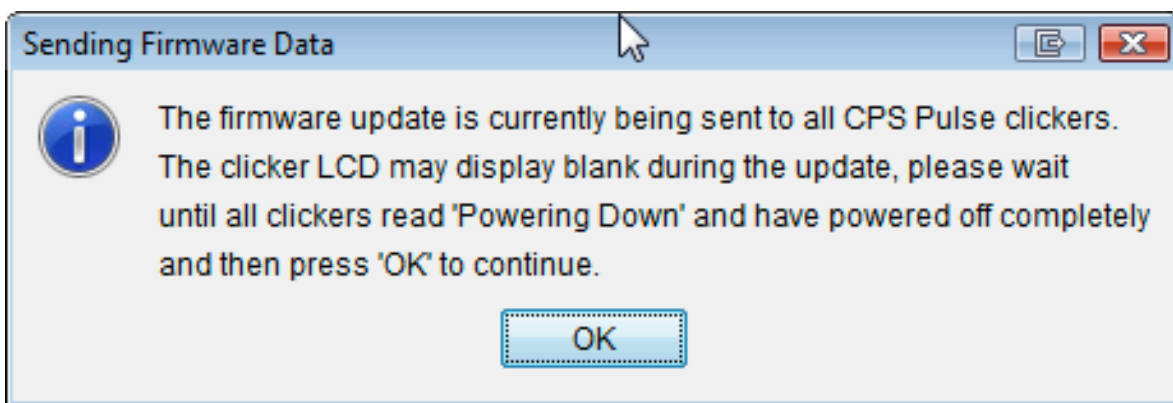
Next, you will receive a warning dialog informing you that you should not do anything with the DM or with the clickers while the update is happening. It also informs you that the clickers will power down automatically when they have finished the update.

When you are ready to begin the procedure, click **OK**.



At this point, you will get a small window that says "Sending Firmware Data." This may take a few moments, and it may appear that nothing is happening during this time, but if you look at the clicker, the "down arrow" will be blinking, indicating that data is being transferred.

After a few moments, you will see the final warning window telling you that the update is being sent to the clickers and that you need to wait until all the pads have completely powered down before you proceed.



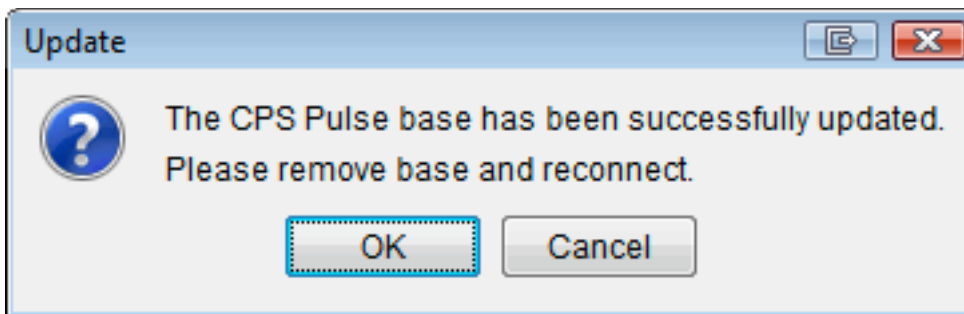
On the clickers themselves, you will see two messages. The first indicates the progress of the data transfer:

Receiving
xxxx/xxxx

The second indicates the progress of the data verification:

Checking CRS
xxxxx/xxxx

When the check is done, the clicker will power off. When all the clickers have powered off, click **OK** to complete the update and return to the device manager.



Click **OK** and then unplug and re-insert the receiver to complete the process.

Congratulations! You've just updated your hardware!